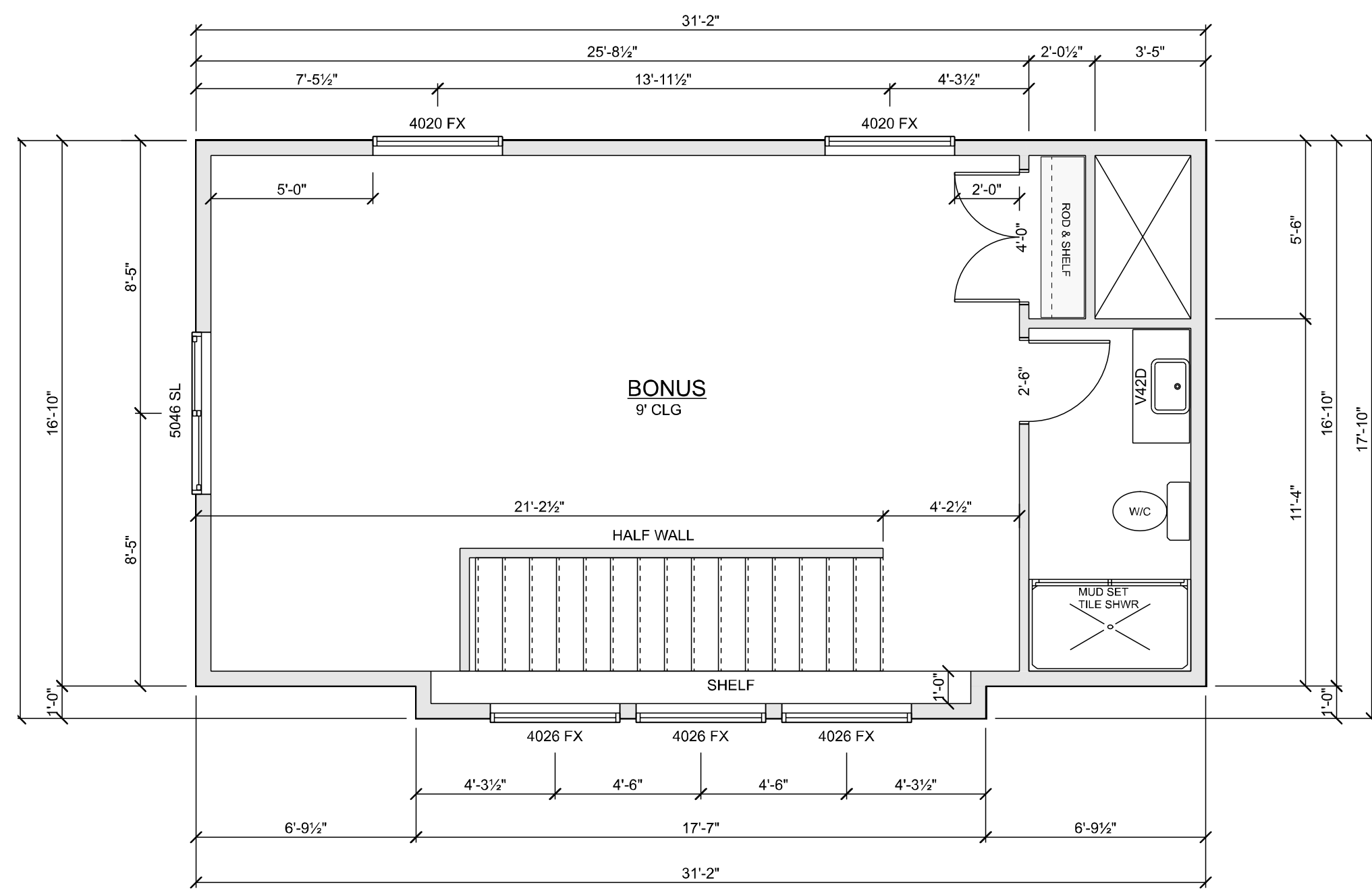


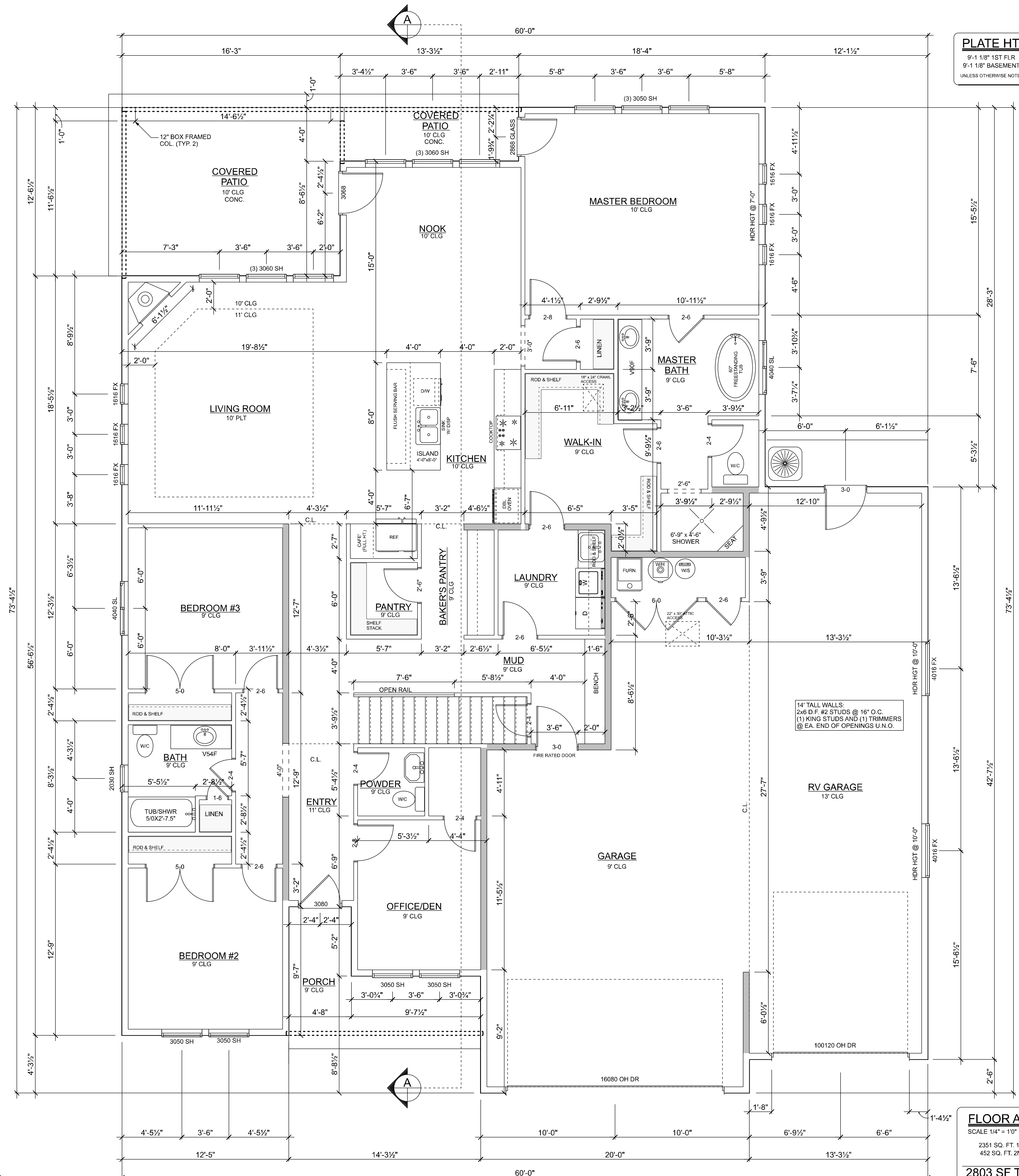
**HEADER NOTE:**

1. ALL LOAD BEARING HEADERS TO BE 4x8 / (2) 2x8 MIN. U.N.O.
2. ALL MAIN FLOOR EXTERIOR WINDOW HEADER HEIGHTS SHOWN AT 7'-6" A.F.F. U.N.O.
3. ALL MAIN FLOOR INTERIOR HEADER HEIGHTS TO BE FRAMED AT 8'-8" A.F.F. (TO BOTTOM OF HEADER) U.N.O.
4. ALL UPPER FLOOR EXTERIOR HEADER HEIGHTS TO BE FRAMED AT 8'-0" A.F.F. (TO BOTTOM OF HEADER) U.N.O.
5. ALL UPPER FLOOR INTERIOR HEADER HEIGHTS TO BE FRAMED AT 6'-8" A.F.F. (TO BOTTOM OF HEADER) U.N.O.



**FLOOR PLAN - BONUS**

SCALE : 1/4" = 1'-0" (FULL SIZE PLANS)



**FLOOR PLAN - MAIN**

SCALE : 1/4" = 1'-0" (FULL SIZE PLANS)

**PLATE HT**  
9'-1 1/8" 1ST FLR  
9'-1 1/8" BASEMENT  
UNLESS OTHERWISE NOTED

**FLOOR AREA**  
SCALE 1/4" = 1"  
2351 SQ. FT. 1ST FLR  
452 SQ. FT. 2ND FLR  
**2803 SF TOTAL**  
1151 SF GARAGE  
257 SF PATIO  
83 SF PORCH

MEMBER  
**A | BD**  
AMERICAN INSTITUTE OF  
BUILDING DESIGNERS  
**DRAFTTECH**  
Turning Dreams into Plans  
1334 E STATE STREET - EAGLE, ID 83616  
(208) 887-1751

Drafttech, LLC  
retains all rights and ownership  
of design, plans and specifications

**BALT, LLC.**

PROJECT  
**LOT 12 BLOCK 2  
LAVENDER  
HEIGHTS**

PRELIMINARY DRAWINGS

REV 1	07-03-23
REV 2	07-17-23
REV 3	07-26-23

CONTRACTOR TO REVIEW DRAWINGS  
PRIOR TO BIDDING AND CONSTRUCTION.  
ANY ERRORS AND OMISSIONS SHALL BE  
BROUGHT TO THE ATTENTION OF THE  
DRAFTER/DESIGNER FOR CORRECTION.

FINAL DRAWINGS  
REV A

CURRENT REVISION: **3**

DESIGNER: A. CABRERA  
DRAFTSMAN: J. MOJAN  
CHECKED BY: \_\_\_\_\_

DRAWING:  
**FLOOR PLAN**

**3**